

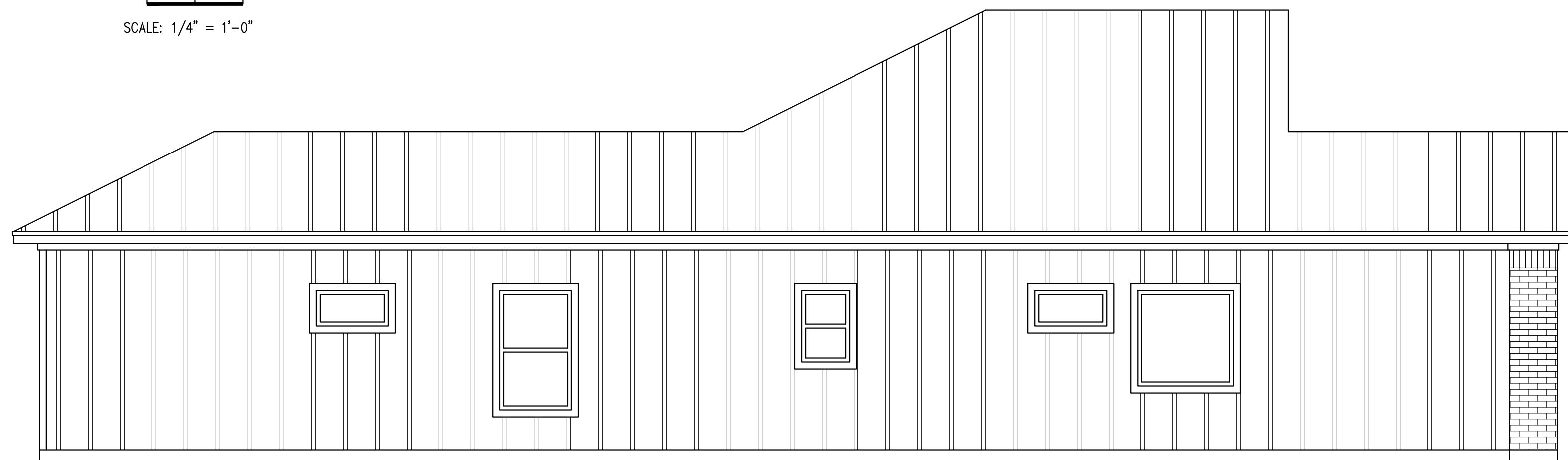


FRONT ELEVATION

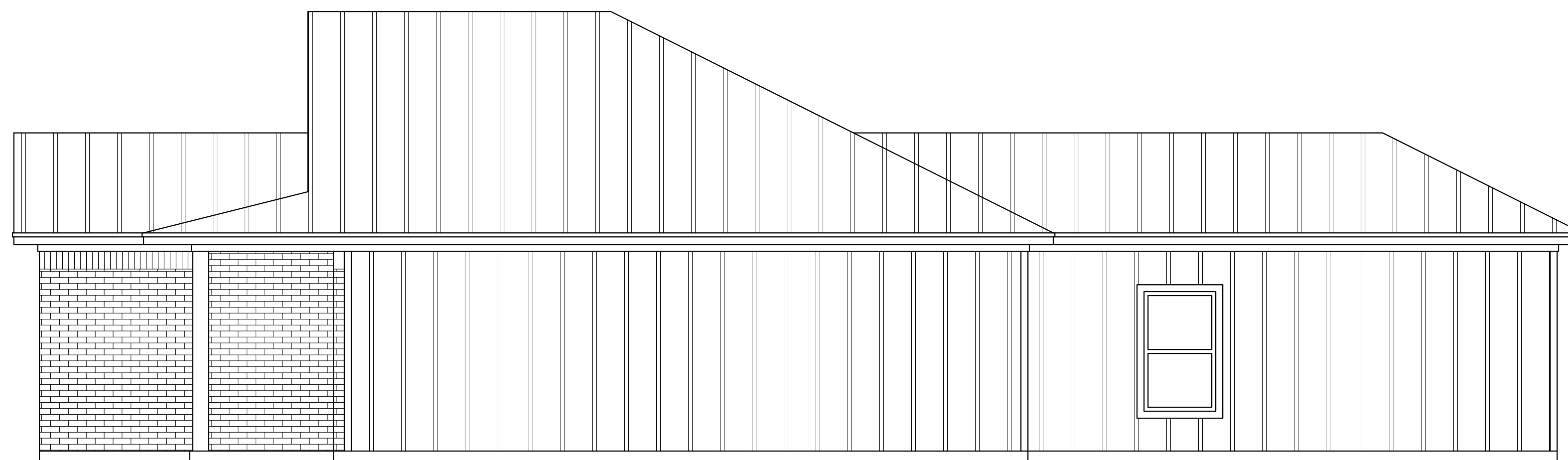
0 2 4  
SCALE: 1/4" = 1'-0"



REAR ELEVATION



LEFT ELEVATION



RIGHT ELEVATION

ROOFING AS SEL  
OVER 15# OR 30# FELT  
OVER 7/16 MIN DECKING  
NO TEARS OR MISSING PATCHES  
IN FELT WILL BE ALLOWED  
PLACE DECKING CLIPS BETWEEN EACH RAFTER  
ACROSS TOP AND BOTTOM OF DECKING

RAFTERS @ 24" O.C.  
CLG JOISTS @ 16" O.C.  
REF INTERNATIONAL BUILDING CODES  
FOR BRACING (PURLINS AND STRONGBACKS, ETC)  
REF SPAN TABLE CHARTS IN SAID CODES  
TO DETERMINE SIZE OF RAFTERS AND JOISTS

INSULATION IN ATTIC

DOUBLE TOP PLATE  
AVOID NAILING TOGETHER  
BETWEEN STUDS  
FASTEN CORNERS WITH 5 16D NAILS

1 X 2 TRIM OVER 1 X 6 OR 1 X 8 FACIA  
OVER 2 X 6 OR 2 X 8 SUBFACIA

WHEN 1 HR RATING IS REQ'D INSERT 1/2"  
FIRE RATED GYP BD BEHIND 1/2" HARDIE SOFFIT  
& INSTALL 1/2" HARDIE FACIA

2 X 4 OUTRIGGERS @ 24" O.C.

SOFFIT VENTS IF NOT FOAM INSULATION

1 X 4 FRIEZE BOARD

2 X 4 STUDS @ 16" O.C.  
OR 2 X 6 STUDS @ 24" O.C.  
REF FLOOR PLAN FOR THICKNESS

INSULATION  
R13 IN 2X4 WALLS  
R19 IN 2X6 WALLS

EXTERIOR GRADE SHEATHING  
(7/16 THICKNESS MIN.)  
CAULK JOINTS, OR INSTALL  
BUILDING WRAP  
IF FOIL FACED, TAPE JOINTS  
WITH FOIL TAPE

MASONRY VENEER AS SEL  
MOISTURE RESISTANT BASE PLATE  
FASTEN STUDS WITH MIN 3 16D NAILS

MEMBRANE FLASHING  
WEEPS @ 40" O.C.

FRAMING DETAILS

0 6" 1'  
SCALE: 1" = 1'-0"

